

'There and Here' Folio 4



D PEOPLE AT THE FAIR 2007-08 145 x 96 £225



E CHIMNEYS WITH BIRDS 2007 99 x 146



F MAN AND HIS DOG 2007 85 x 117



G SEA WATCHER II 2008 61 x 101



H SEA WATCHER III 2008 67 x 80



I MISTY SUNRISE 2002 77 x 131



J VALLEY FLOOR 2005-07 97 x 159



K RESERVOIR WATERFALL 2003-05 65 x 134



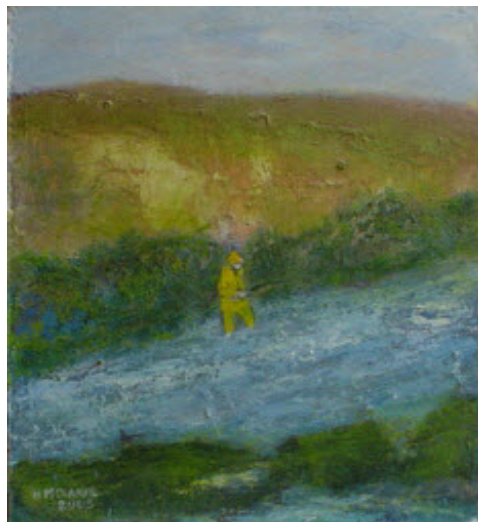
L 'FREE' TREE 2008
170 x 89



M SUNFLOWER FIELD 2006-07 94 x 137



N SUNSET CORNFIELD 2007 128 x 183



O YELLOW FISHERMAN 2005 193 x 177



P KITE WATCHER
2007 209 x 79

**Hilda
Margery
Clarke**

'The First' Gallery April 2008

All dimensions in mm

'There and Here' Folio 4 - page 2



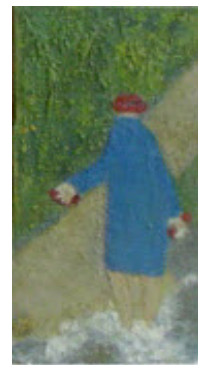
Q WAVE IN GREEN SEA 2007 108 x 210



S CROWDED 1998 108 x 143



T ON THE ROAD 2002-06 133 x 200



U RED SHOES 2003-05 134 x 74



W CORNISH CLAYPIT 1993 100 x 190



X CLAYPIT, CORNWALL 1993 122 x 208



**C HORSE-SHOEING COMPETITION, SUFFOLK II
2007-08 145 x 232**



**A LADY KNOX GEYSER, N.Z.
2008 111 x 101**

All dimensions in mm